

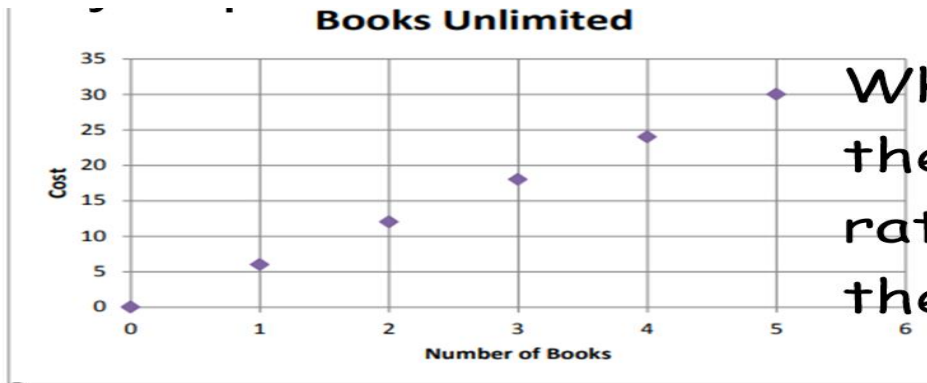
6- RP EOG review This week's redos are on IXL. When you complete an IXL turn in your original paper with the IX L skills you completed to 80 or more for each skill noted. Thank you!

Monday 6rp 2 : On a bicycle Jack can travel 20 miles in 4 hours. What are the unit rates in this situation, (the distance Jack can travel in 1 hour and the amount of time required to travel 1 mile)?

Monday Relooping (IXL 6R7, 6R9) smart score of 80 or more on each

Tuesday:

1)



What is the unit rate for the table?

6rp3 a

2)

Books R Us

| Number of Books (n) | Cost (C) |
|---------------------|----------|
| 4 | 20 |
| 8 | 40 |

Fill in the table. Which is the better buy?

Tuesday Relooping (IXL 6R5)

Thursday: 6rp2a

- 1) The ratio of cups of orange juice concentrate to cups of water in punch is 1: 3. If James made 32 cups of punch, how many cups of orange juice did he need? How much water?

RELOOPING (IXL 6R7, 6R9)

Friday : 6 rp3c

- 1) What percent is 8 out of 25?
- 2) What is 30% of 30?
- 3) If 30% of the students in Mrs. Rutherford's class like chocolate ice cream, then how many students are in Mrs. Rutherford's class if 7 like chocolate ice cream?

RELOOPING IXL (6s5, 6S9)